

Nunawading Christian College

2019 Secondary Annual Report





Table of Contents

Table of Contents	1
School Overview	2
Mission Statement	2
Introduction	2
Child Safe School	2
2019 Fast Facts	3
Nunawading Christian College Secondary Campus	3
A Message from the Principals	4
Teacher Professional Engagement	5
Staff Retention	5
Staff Leave	5
Expenditure and Teacher Participation in Professional Learning	5
Other Professional Development Activities	6
Staff qualifications	7
Academic Studies	8
Junior School Studies	8
Senior School Studies	8
Student Attendance	8
National Benchmarks	8
Year 7 NAPLAN	9
Year 9 NAPLAN	9
VCE Results	9
Summary of results	10
Where is the class of 2019?	11
Value-Added Programs	12
Income for 2019	13
Expenditure for 2019	13
School Community Feedback	14
Future Direction	15
Learning and Teaching	15
Character and Community	15
Facilities	16



School Overview

Mission Statement

Our mission at Nunawading Christian College is to assist parents to provide their child/ren with a quality learning environment based on Christian values and beliefs. Our College staff strive to provide a safe learning environment that will empower, nurture, challenge and inspire students to learn and achieve their God-given potential.

Introduction

Nunawading Christian College (NCC) Secondary is an independent co-educational school, providing excellent holistic education from Year 7 - 12, founded on Biblically supported principles and values. The College is respected for fostering self-confident, responsible and successful students, and for developing each individual to their fullest potential by providing a tradition of education balanced in academic, sporting, social and spiritual nurture.

Students at Nunawading Christian College are encouraged to develop a spirit of teamwork, achieve personal goals, and develop a strong positive character through a broad range of co-curricular experiences including sports, performing arts programs, mission trips, service projects and annual class camps.

Child Safe School

Nunawading Christian College is committed to the safety and wellbeing of all students. The College has a zero-tolerance for child abuse and has procedures in place to protect children, support those who are vulnerable or at risk and respond to incidents or allegations of all forms of child abuse. These procedures are outlined in the Duty of Care, Child Protection and Child Safe Code of Conduct policies. All policies are available for viewing on the school website.



2019 Fast Facts

Education Level: Secondary

Type: Co-educational

Affiliation: Seventh-day Adventist Church

Total enrolments: 170

Average class size: 17

Teaching staff: 23

VCE Class: 19

VCE Pass Rate: 100%

Year 9-12 Retention: 66%

Tuition Fees Range: \$8,560 - \$9,400

Tuition Levy: \$1,560

Nunawading Christian College Secondary Campus

Years: 7-12

Address: 161 Central Rd, Nunawading VIC 3131

Phone: 03 9877 3555

Fax: 03 9878 3776

Email: admin@ncc2.vic.edu.au

Web: ncc2.vic.edu.au

RSB No.: 1712

VCAA No: 1745

CRISCOS No.: 00676M

Principal: Mrs Hanna Stekla (B.Ed) and Ms Meggan James (BA, MofEd)



A Message from the Principal

To echo the words of 1 Samuel 7:12, 'Thus far the Lord has led us'.

Looking over the last year, we feel blessed to see students who have faced challenges, conquered fears and grown in confidence, personally as well as academically. The staff have worked consistently to develop the positive academic, spiritual and social culture with a commitment to maximising student opportunities. Christian based values have been emphasised in classrooms, weekly chapels, camps and on the sporting field.

Students are the heart of our community and it has been a joy to see student leadership and student voice grow in 2019. Student-led spiritual ReVibe evenings, service projects like the Cambodia fundraisers, church and community visits, Secondary Praise and Worship Band, have enriched our student's learning experiences. Other initiatives have been well received such as 'Write a Book in A Day' which helps kids with terminal cancer, ANZAC and Remembrance Day Services. The Extension Maths program in Years 7&8 showed growth evidenced by the increasing number of awards being won in National competitions. Sports and early morning plyometric training has given students opportunities to push their boundaries, and grow in confidence and skills. Our first ever Spiritual Camp for Years 7-12 was enjoyed by many and has been added to our plans for 2020. Year 10's presented to Grade 5/6 on the Cambodia trip, Year 8's wrote and read Creation storybooks to Year 1's. Prep students blessed Year 12's with morning worship, Peer Support Buddies bonded and fostered new relationships with the Nunawading Christian College Primary School. Increased applications have brought about waiting lists for 2020 Year 7.

Our Master Plan committee is reviewing redevelopment plans to cater for future growth and innovation.

Staff engaged in ongoing professional development. Teachers have completed their training in Making Thinking Routines Visible as part of the Harvard University Project Zero Project in partnership with ISV and have been utilizing the Thinking Routines in Primary and Secondary classes. We continued to embed the Positive Behaviour 4 Learning program to enhance the growing culture of Respect, Resilience, Responsibility and Integrity.

The rich spiritual tone among staff and students reinforced the strong culture of inclusiveness and belonging. Staff have been committed to the vision of the school.

NCC has been blessed in 2019 and we look forward to 2020 knowing that God will lead because He has plans for our school, "plans to prosper you and not to harm you, plans to give you hope and a future." Jeremiah 29:11.

At the core of our culture at NCC is God: our motto is Nothing Without God. God has continued to bless Nunawading Christian College.

Mrs Hanna Stekla

Principal

Teacher Professional Engagement

Staff Retention

Staff retention at Nunawading Christian College Secondary is very high, with minimal staffing changes from year to year. The proportion of staff retained from the previous year was 100%, with two new teachers joining the teaching team for 2019.

The shared passion, commitment to students and the school remain very high, facilitating stability, efficient planning and implementation of long term goals and whole staff professional development.



Staff Leave

Throughout the 2019 school year, the teaching staff at Nunawading Christian College Secondary had an average of 7.2 days leave. This includes long service leave for ten staff. This equates to 96.4% attendance rate throughout the year for teaching staff. This is a testament to the commitment and dedication of our teachers.

Staff age

The average age of teachers is 45 years old.

Expenditure and Teacher Participation in Professional Learning

Staff at Nunawading Christian College Secondary are lifelong learners. Professional development is a priority for all staff in both a formal and informal context.

In 2019 the total expenditure on professional learning for staff was \$16,689. Staff engaged in both free and paid professional development opportunities.

Staff receive regular professional development in the areas of ICT, pedagogy, wellbeing, child safety and meeting the needs of students with disabilities, in addition to professional development for specialist subject areas. As such, our teachers engage in a number of professional development courses throughout the year to ensure they keep up-to-date in the fast-changing world of learning.

All teachers participated in a combined SDA Schools (Victoria) professional development program. This is a comprehensive, 2-day conference which focused on Wellbeing as well as workshops on pedagogy, ICT and interventions.

All NCC staff participate in annual First Aid training, including CPR and anaphylaxis training, Mandatory Reporting, Child Safe and Special Needs training.



Other Professional Development Activities

Autism Strategies

SDA Distinctives

VCE School Leaders Briefing

Victorian Association of Teachers of Texts and Traditions Annual Conference

Students with Special Needs training for all staff

VCE English VATE Conference

Enhancing English Skills

VCE Physics Conference

VCE Psychology Conference

VCE Chemistry Conference

VCE Maths

Enhancing the Teaching of History

STEM Conference

Making Thinking Visible - Partnership with Harvard Project Zero

Health and Human Development Toolkit

The Disability Standards for Education - University of Canberra

Staff qualifications

All teachers at NCC Secondary are qualified and registered with the Victorian Institute of Teaching (VIT) in accordance with government regulations.



Name	Qualification
Elizabeth Allen	Bachelor of Education, Graduate Diploma of Education studies
Karyn Bonnington	Bachelor of Maths/Science Teaching
Mark Bower	Bachelor of Arts; Bachelor of Education
Colin Gallagher	Bachelor of Education
Amy Davilla	Bachelor of Arts; Master of Teaching
Anne-Marie Godfrey	Bachelor of Science; Bachelor of Teaching
Meggan James	Bachelor of Arts; Masters of Education, Post Graduate Diploma in TESOL; Qualified TESOL Teacher Trainer
Jenny Kavur	Bachelor of Education; Bachelor of Business, Masters of Leadership and Management
Rhondell Kelly	Bachelor of Education
Marty Kutschker	Bachelor of Teaching
Jody Lawson	Bachelor of Science; Postgraduate Degree of Teaching (Primary and Secondary); Masters of Education
Rebekah Martin	Bachelor of Education
Michael Maslin	Bachelor of Education/ Bachelor of Science
Charles Njock	Bachelor of Arts; Diploma of Teaching
Heather Pitt	Diploma of Teaching
Daniel Selent	Bachelor of Education
Hanna Stekla	Bachelor of Education
Dianne Styk	Bachelor of Education; Masters of Education
Sarah Tierney	Bachelor of Education
Ben Thomas	Bachelor of Education; Masters of Education
Daryl Thompson	Bachelor of Education
Heather Woodhouse	Bachelor of Education

Academic Studies



Junior School Studies

- Spiritual and Personal Development
- English
- Mathematics
- Science
- STEM
- Geography
- History
- French
- Art
- Food Technology
- Drama/ Performing Arts
- Design and Technology
- Literature
- Journalism
- Commerce
- Digital Media
- Year 9 Challenge
- Physical Education
- EISM Sport
- Chapel

Senior School Studies

- English
- Texts and Traditions
- General Maths
- Further Maths
- Maths Methods
- Chemistry
- Physics
- Biology
- Psychology
- History
- Accounting
- Business Management
- Art
- Product Design and Technology
- Health and Human Development
- Physical Education

Off-campus/TAFE/ Distance Education/
Victorian School of Languages

- Chinese First Language
- Indonesian Second Language
- Spanish
- Specialist Maths

Student Attendance

In 2019 the average daily attendance rate for students was 92.36%. The count of students with an attendance rate of $\geq 90\%$ was 96%. This is a testament to the commitment of our and dedication of our parent community.

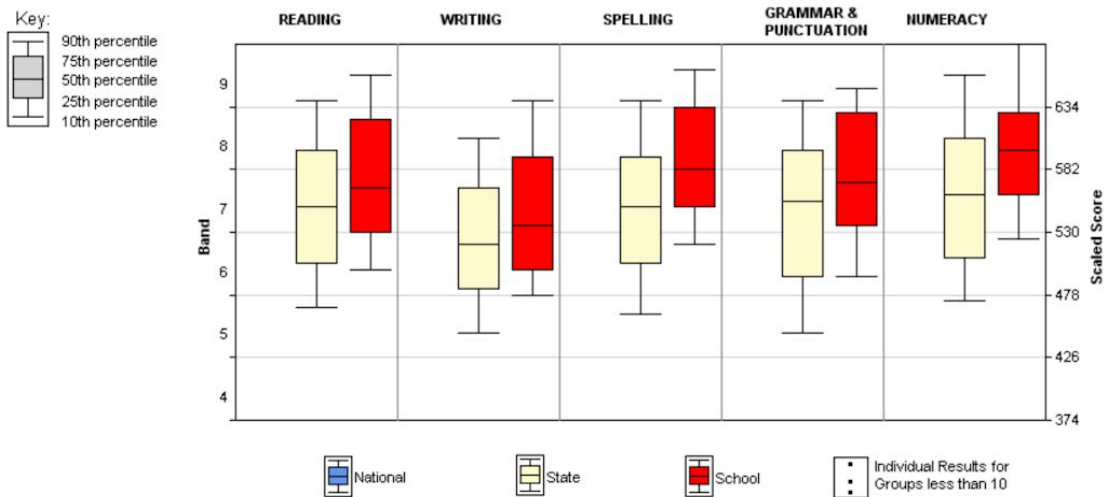


National Benchmarks

National Assessment Programs in Literacy and Numeracy (NAPLAN) testing scores show how a school or an individual student is performing according to national benchmarks in Reading, Writing, Grammar and Punctuation, Spelling, and Mathematics. The chart below indicates how students at Nunawading Christian College Secondary performed for Years 7 and 9 in 2019.

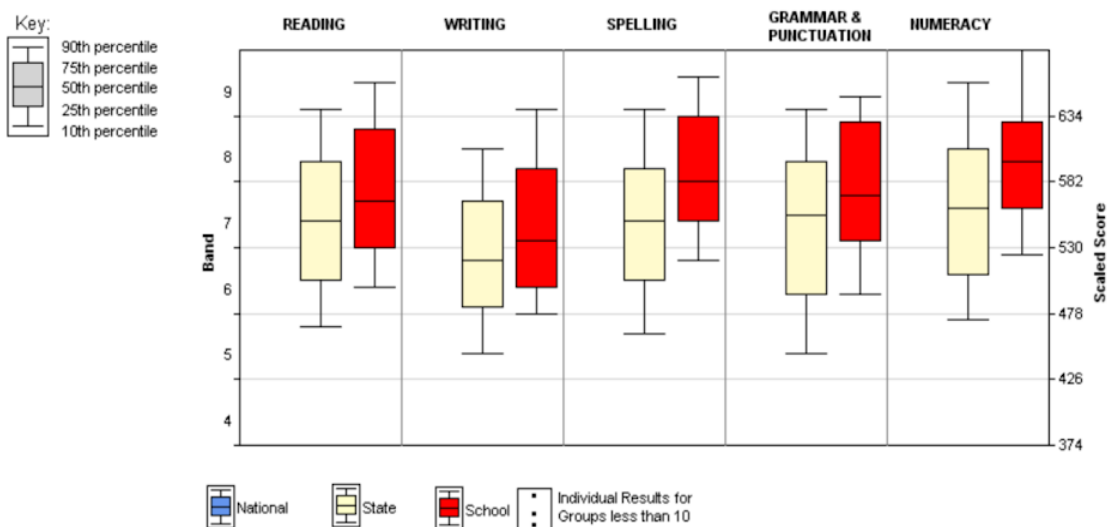
Year 7 NAPLAN 2019

School Summary Report



Year 9 NAPLAN 2019

School Summary Report





VCE Results

We are so proud of our Class of 2019 and want to thank them for their diligence and integrity in completing their VCE courses. They have been a terrific class; diligent in their study but also participating in the broader school and church communities by mentoring younger students and leading out at numerous events. They have been very positive contributors to the tone and culture of our school.

Educating the whole child is very important to us. As stated in our mission, the teachers, support staff, families and peers have worked together to create an environment where all students are empowered, nurtured, challenged and inspired to learn and achieve their God-given potential.

We affirm the whole class and congratulate them on their strong VCE results.

Summary of results

Top ATAR Score	98.45
Average ATAR	80.54
% of ATARs above 95	10%
% of ATARs above 80	63%
Total Year 12 students	19
Number of Tertiary applicants	19
Tertiary offers received via VTAC or individual application	100%

Where is the class of 2019?

The Class of 2019 has been successful in gaining places to tertiary institutions.

Offers were received for institutions including:

- The University Of Melbourne
- Monash University
- Deakin University
- RMIT University
- Swinburne University of Technology
- Australian Catholic University
- Box Hill Institute

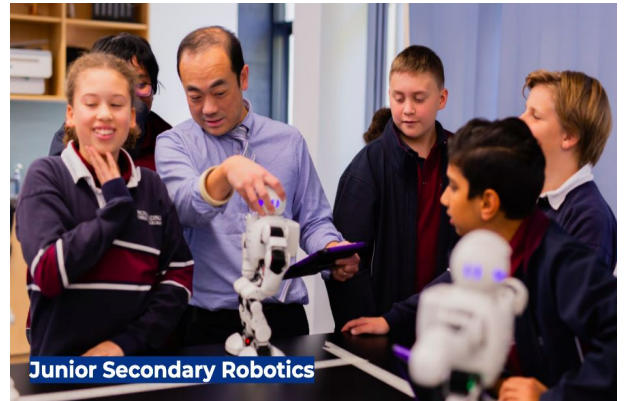


Area of study	Number of students
Animation	1
Arts	2
Arts/Law	1
Biomedical Science	2
Biosecurity Science	1
Business	2
Design	1
Engineering (Honours)	4
Health Science	2
Nursing	2
Occupational Therapy	1

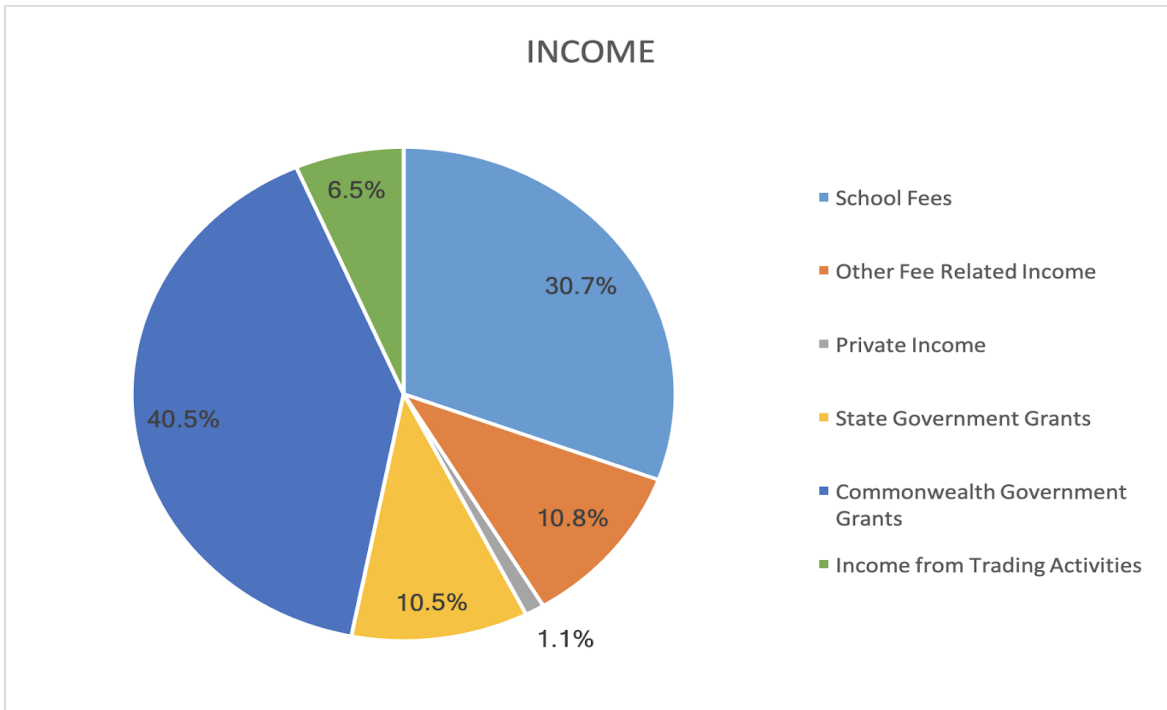
Value-Added Programs

Nunawading Christian College Secondary recognises the importance of developing a sense of achievement in each student. Whether students participate in individual, group, or whole school activities, we strive to develop well-balanced individuals who enjoy their involvement and see that active participation is a skill in itself. A number of initiatives have added value to the school program. They include:

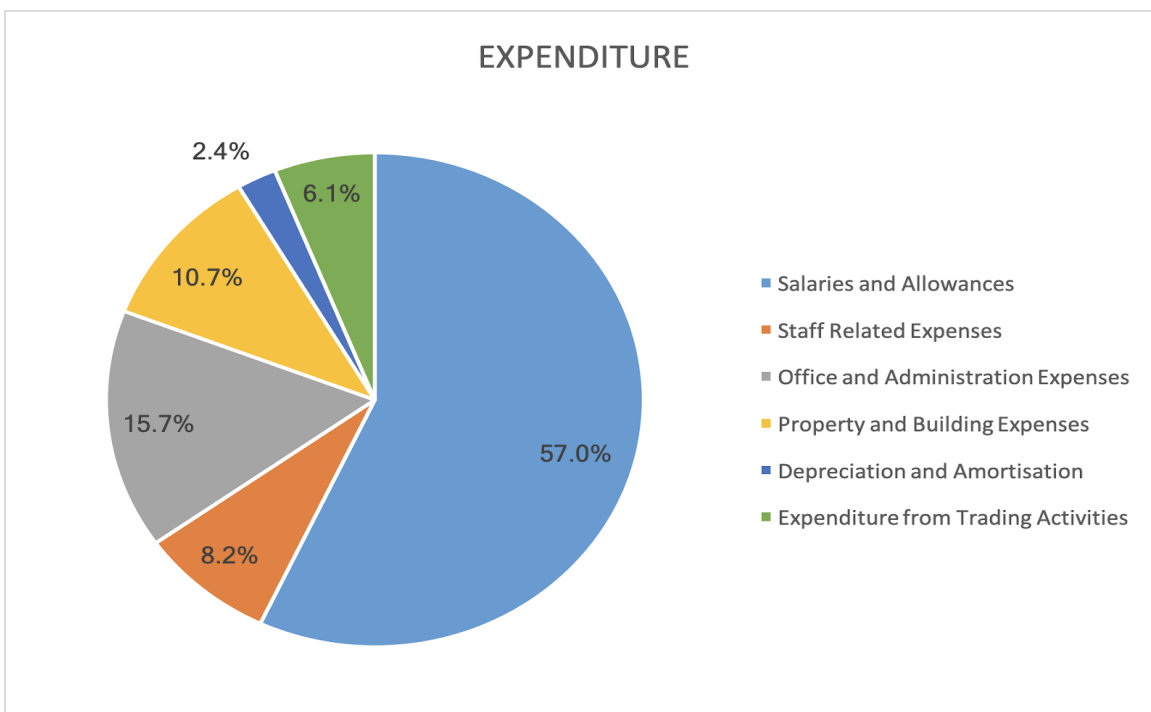
- Year 9 Challenge Program
- Peer Support Program
- Camp Program for Years 7, 9 & 11
- Spiritual Camp for Year 7-12
- Ability-split Maths Classes
- Science Enrichment Program
- English Enrichment Program
- Service Project
- EISM Sports Program
- Chapel & Worship Programs
- Student Leadership Program
- STEM Program
- Pastoral Care Program
- International Service Trip
- Drama
- Gender Split English Classes (Year 7 & 8)
- Debate Club
- Choir
- Year 8 Highlight Days - Art, Masterchef, Ninja Warrior, Mystery Bus Tour, Poetry in the Bush
- ASV Sport
- Berthe Mouchette French Competition



Income for 2019



Expenditure for 2019





School Community Feedback

Feedback from our school stakeholders is important to us and therefore each year we conduct satisfaction surveys with our students, parents and staff. Results from the 2019 surveys allowed the school to analyse feedback received from these three cohorts. The surveys gained measurements of a number of areas of student, staff and parent satisfaction. Here are some of the results from these surveys: (please contact the school for comprehensive results from these surveys).

Parent perceptions	% favourable
Overall I am satisfied with the education my child receives from their school	100
My child enjoys the learning they do at school	96
My child is well prepared for the next stage in his/her education	91
My child is developing valuable social skills	100
The teachers at this school manage student behaviour fairly	100
Teachers at this school motivate my child to want to learn	100
I feel comfortable about approaching this school with any concerns I might have	93
Student perceptions	
I feel positive at school	92
I feel I belong at this school	88
I am liked by others at this school	94
Teachers provide help and support when it is needed	92
My teachers always help me to build on my strengths	92
My teachers listen to what I have to say	92
I think I am generally successful at school	93
Staff perceptions	
I am happy with the decision making processes that are used in this school	86
There is support from the leaders in this school	97
Staff in this school are encouraged to improve their skills, knowledge and performance	100
There is good team work in this school	97
The staff are committed to the school's goals and values	100
Staff take pride in this school	100



Future Direction

Looking towards 2020 and beyond, we are excited about how our school has progressed this year. We have seen a growth in the number of students attending our college, our academic results continue to grow and our facilities have undergone substantial renovation.

Learning and Teaching

Our staff remain committed to the philosophy of our school of educating the whole child to develop academically, emotionally, physically and emotionally. Our teachers continually strive to deliver quality classes with strong academic rigour. Ongoing professional development that is targeted to maximise quality teaching and learning is a strong strategic intent. Staff have been fortunate to be part of six Member Schools participating in a program with Independent Schools Victoria (ISV) which has explored the concept of Making Thinking Visible in a Complex world and Looking at Cognition in Action in classrooms. This action research-based project has trained all of our teachers in using Visible Thinking Routines as a means of inquiry in classrooms. The new Visible Thinking Routines were developed in conjunction with Harvard University's Project Zero (PZ) and ISV and have made an impact in our classrooms.

Character and Community

At the heart of our school is our strong commitment to providing a quality learning experience in a culture that embraces a Christian worldview and recognises the importance of emotional intelligence, collaboration and community.

As such, we are continuing to roll-out our PB4L (Positive Behaviour for Learning) framework which has the core values of respect, responsibility, resilience and integrity. These Christian values help add to the ethos of our college and community and build a culture where positive behaviour and learning is a way of life.

Facilities

We were pleased to see the completion of a brand new purpose built library which will facilitate the needs of both primary and secondary students. We also saw the addition of a lift in our quadrangle as well as a new Science Centre with brand new classrooms and labs for Physics, Chemistry and Biology. We have updated a new general purpose classroom as well as office space for two teachers. The modernisation of our facilities is part of our ten-year masterplan which is in its fourth phase and progressing well. We would like to acknowledge and thank the Victorian Government for their grant and Adventist Schools Victoria for their loan to fund these new buildings.

We look forward to 2020 and beyond, anticipating positive experiences and growth in our community, facilitating learning for living and character development for life.