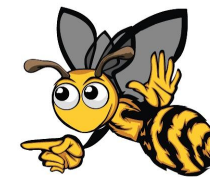


Secondary PB4L Matrix

Always and Everywhere



Being
Respectful
means I will...

Be an **attentive** listener when others are speaking.

Always say '**please**', '**thank you**' and make **eye contact** with others.

Accept all contributions peers make during learning.

Use **positive language** with others.

Move around the school in a **safe** and **calm manner**.

Be **inclusive** and **empathetic**.

Offer assistance to others.

Show reverence during chapel and prayer times.

Line up **quietly**.

Being
Responsible
means I will...

Bring the **appropriate resources** to class.

Complete all learning without reminders.

Always carry my **diary** and use it effectively.

Model **appropriate behaviours** that will **influence others** positively.

Take care of my own, others and the school's **resources** and **facilities**.

Use **IT devices** for their intended purposes and at the required time.

Be **punctual**.

Keep my **locker organised** and tidy.

Keep my **phone** in my locker.

I will wear my **uniform correctly** and with pride.

Being
Resilient
means I will...

Persevere through challenges and focus on the task at hand.

Find ways to **solve problems**.

Resolve conflict in a restorative way.

Use my **initiative** and be resourceful.

Accept feedback as an opportunity to improve myself and my learning.

Confidently **contribute** in **class discussions**.

Show **humility** when I win and **acceptance** when I lose.

Accept that mistakes happen and **forgive** myself and others.

Being a
Learner
means I will...

Apply feedback to improve my learning.

Create a **study timetable** to enable effective **revision habits**.

Create a **home learning area** free from distractions.

Think deeply about concepts taught.

Seek feedback.

Create **healthy habits** to support my learning.